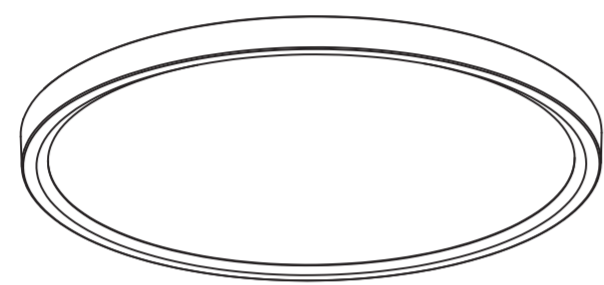
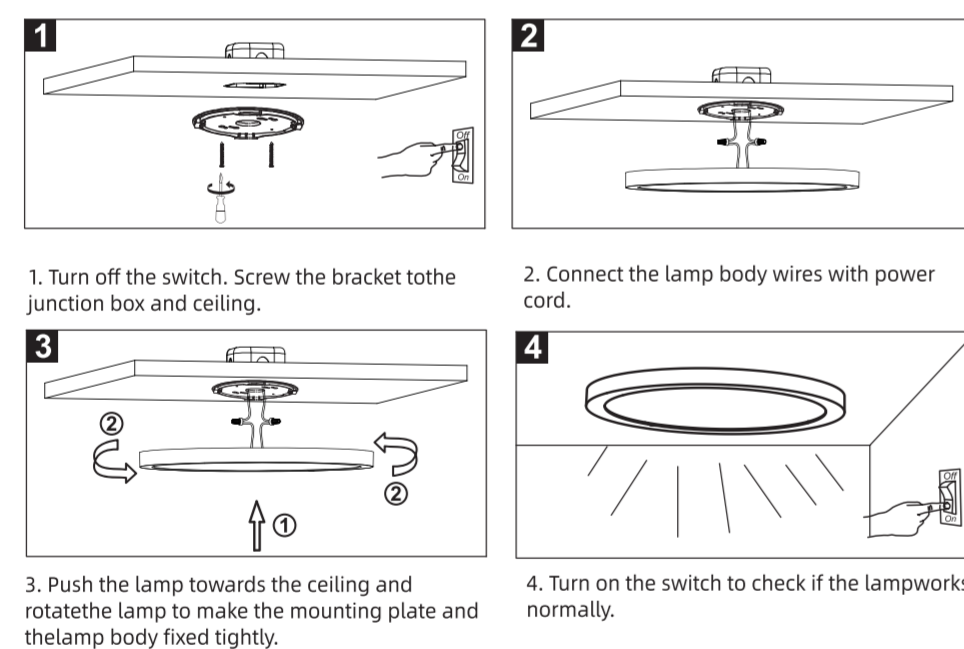


Item:
MRFM1630-5CCT
MRFM2448-5CCT

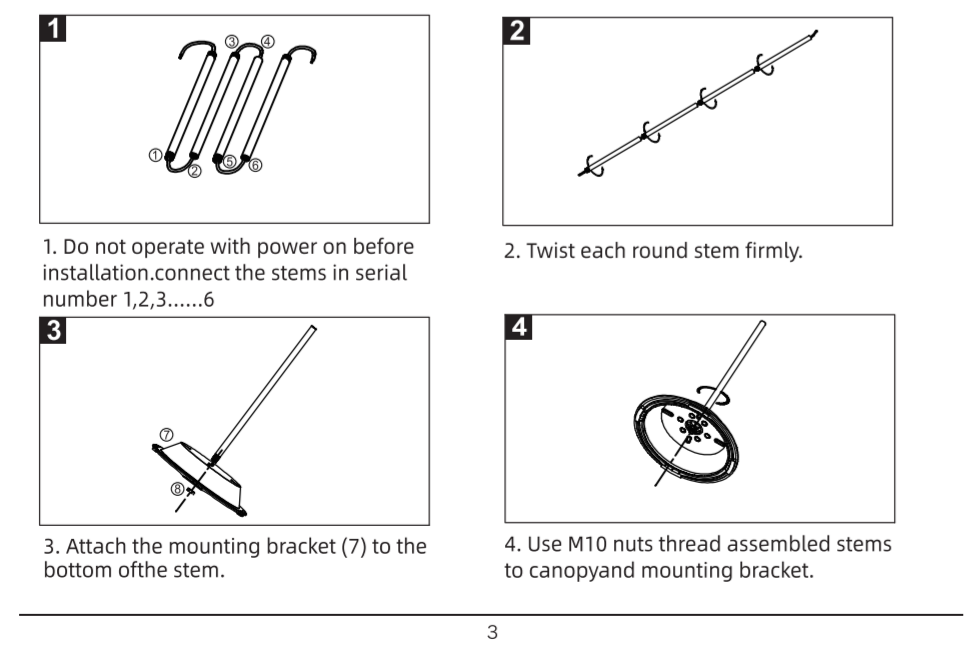
16/24Inch 5CCT FLUSH MOUNT CEILING LIGHT



Surface Mount installation



Stem pendant Installation (Fit to 12", 16")



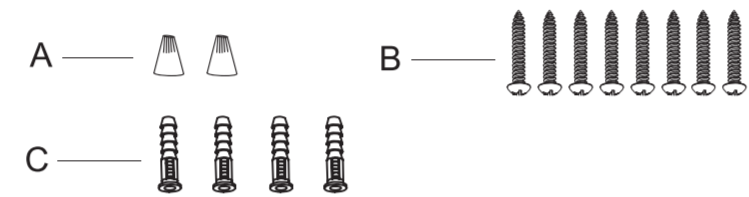
IMPORTANT SAFETY INFORMATION

1. WARNING : RISK OF SHOCK House electric current can cause painful shock or serious injury unless handled properly. For your safety always remember to :
A : Turn off the power supply at the fuse or circuit breaker box before you install the fixture. Double-check all connections to be sure they are tight and correct.
2. This fixture is designed for use in a circuit protected by a fuse or circuit breaker. It is also designed to be installed in accordance with local electrical codes. If you are unsure about your wiring, consult a qualified electrician or local electrical inspector, and check your local electrical code.
3. WARNING : RISK OF CUTS Some metal parts in the fixture may have sharp edges. To prevent cuts and scrapes, wear gloves when handling the parts.
4. Account for small parts and destroy packing material, as these may be hazardous to children.
5. The light source contained in this luminaire shall only be replaced by the manufacturer or his service agent or a similar qualified person.
6. Terminal block and the suspending accessories is not included. Installation must be performed by a qualified person.

TOOLS REQUIRED



PACKAGE CONTENT

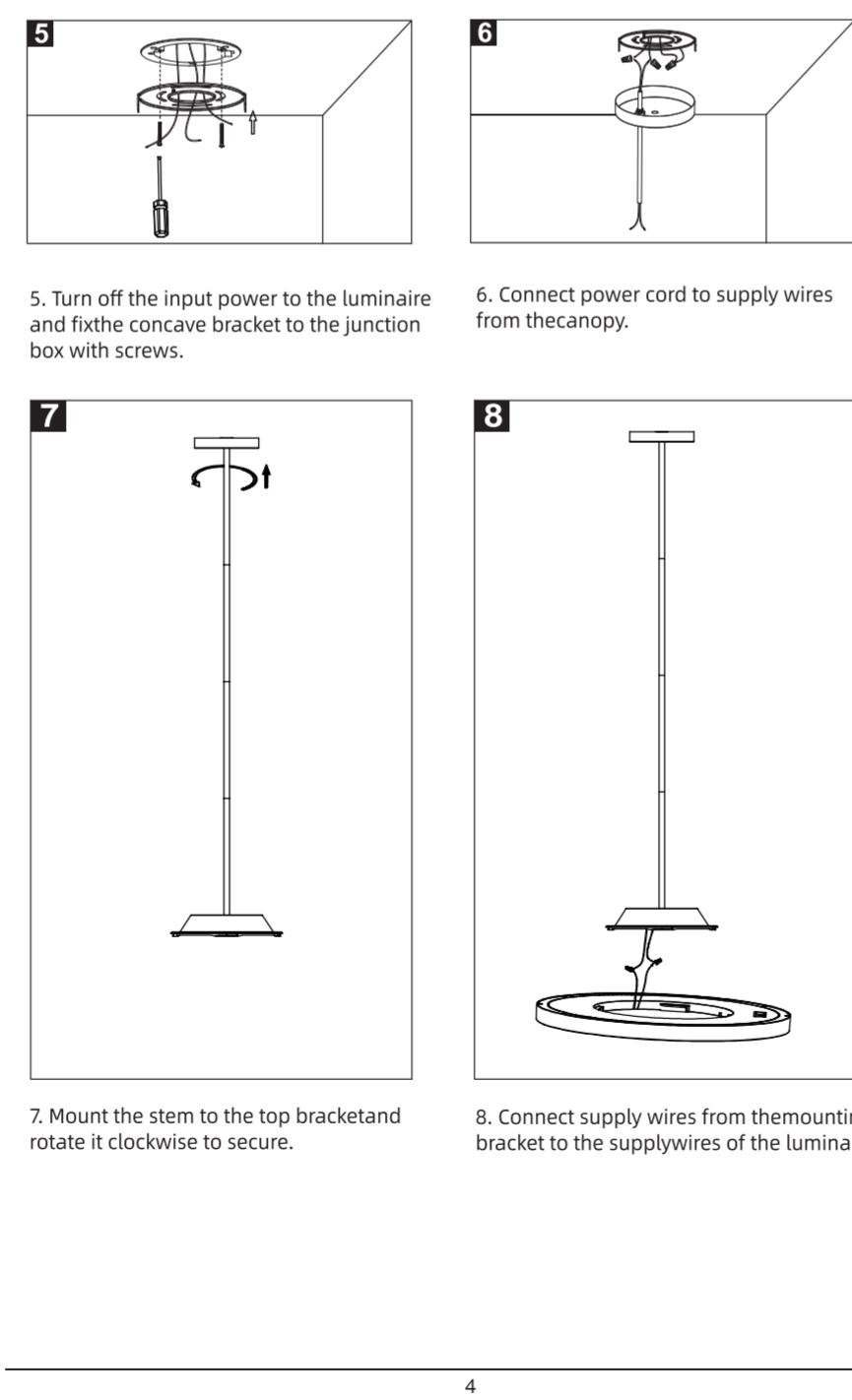


	PARTS	pcs
A	Wire Nuts	2
B	Screws	8
C	Anchors	4

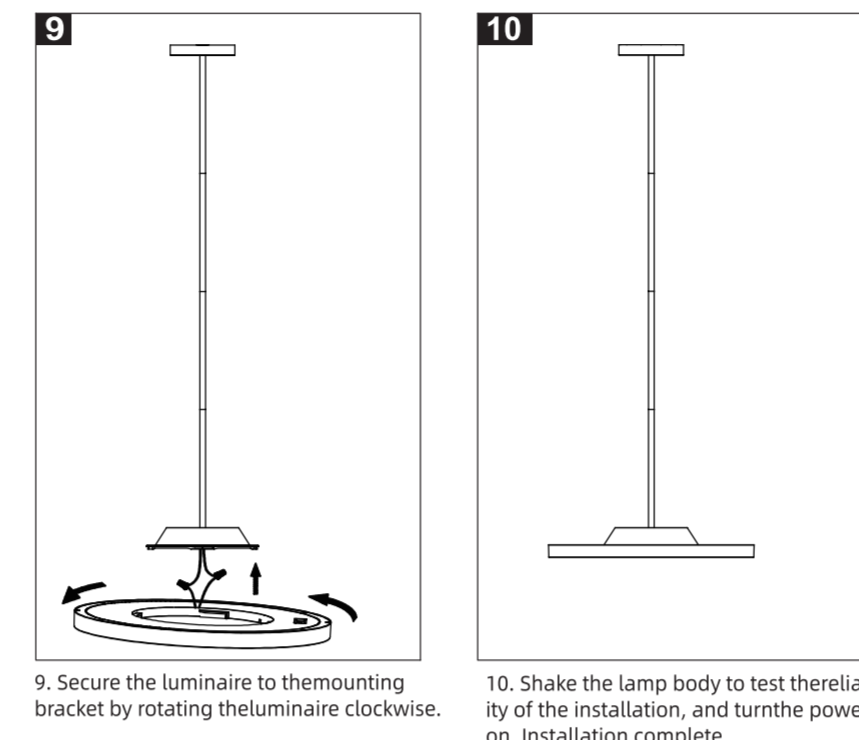
Product Specification

No.	Wattage(w)	Voltage(V)	Rated Input Frequency(Hz)	Beaming(°)	Size(in)
1	30W	AC120V	60Hz	120°	φ16x0.94
2	48W		60Hz	120°	φ24x0.94

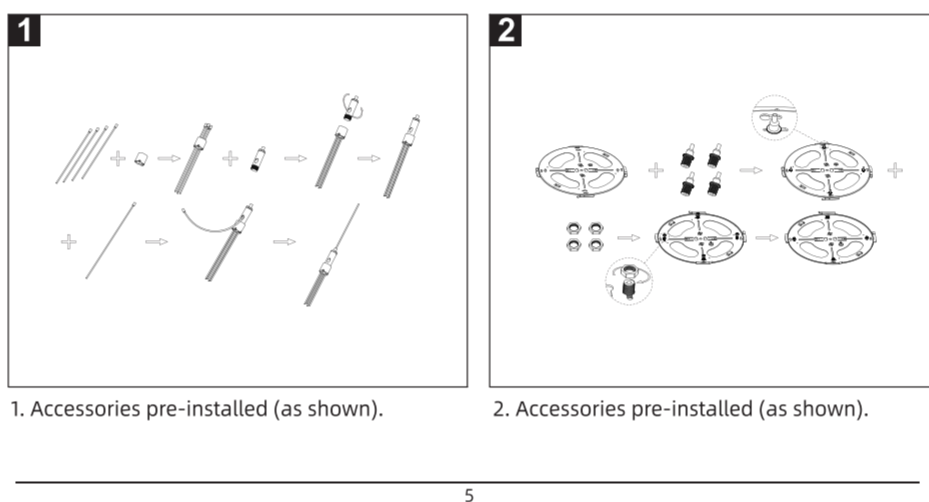
Stem pendant Installation (Fit to 12", 16")



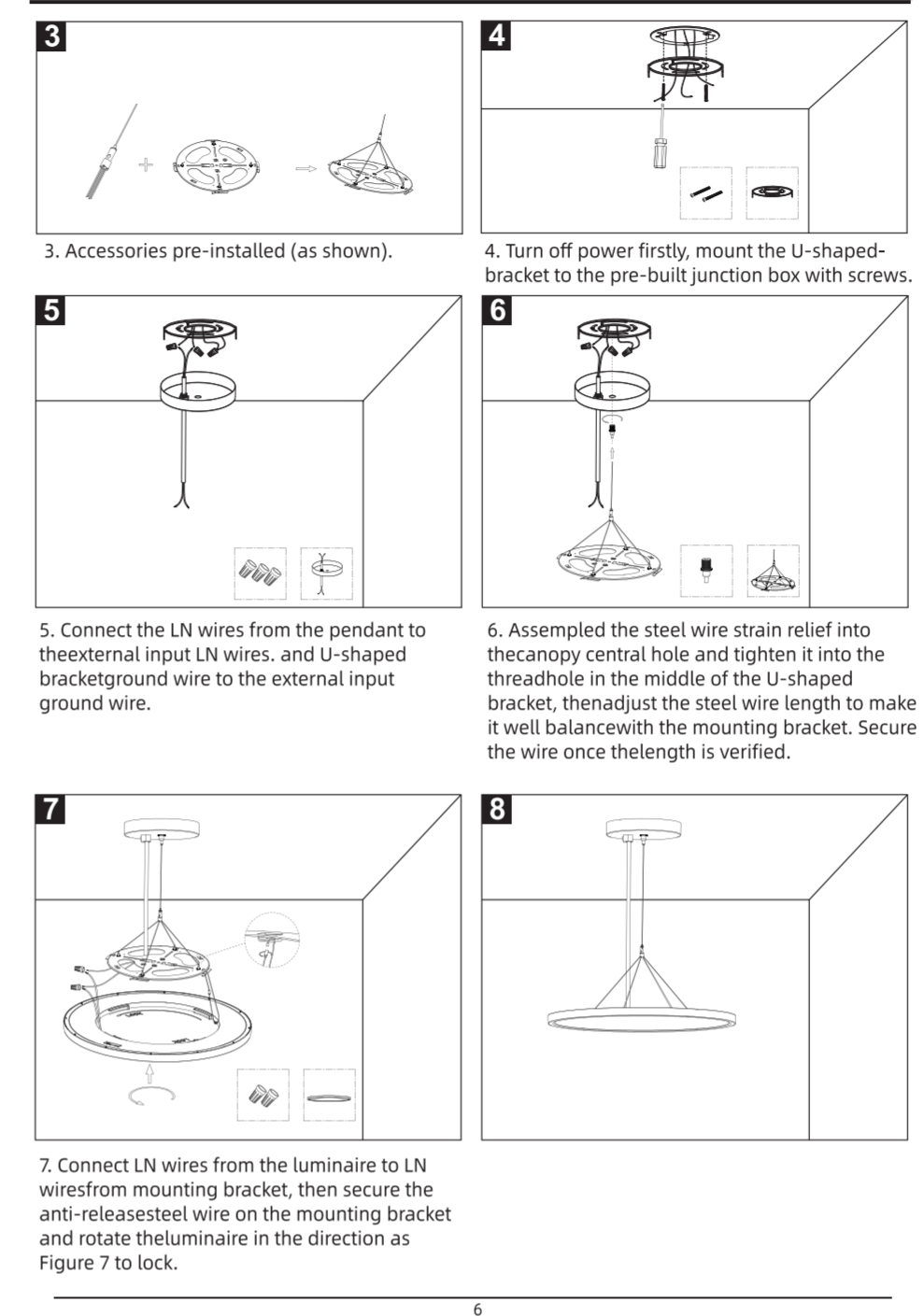
Stem pendant Installation (Fit to 12", 16")



Stainless Steel Cable Suspension Installation (Fit to 24")



Stainless Steel Cable Suspension Installation (Fit to 24")



Recommended dimmer:

Leviton 6672-1LW
MACL-153MR-WHLutron
SCL-153P-WHLutron
PD-6WCL-WHLutron
LutronCTCL-153P-WHLutronMSCL-OP153M-WHLutronDVCL-153P-WH

Caution

- WARNING : Risk of fire. Use AC120V 60Hz circuits.
- Suitable for damp locations. Before installing your lighting fixture, thoroughly review enclosed installation manual. If you do not have sufficient electric wiring experience, please refer to a do-it-yourself wiring handbook or have your fixture installed by a qualified licensed electrician. All electrical connections must be in accordance with local and National Electrical Code (NEC) standards. Reliable operating temperature is -20 to +40 degrees Celsius (-4 to +104 degrees Fahrenheit).
- pls obey fire prevention regulations, do not cover the fixture with any heat insulated materials.
- Do not change the LED light source or driver inside under any circumstance.

Warranty: 5 years warranty

WARNING

This product is warranted for 5 years from the date of purchase. If this product does not perform to the specifications supplied on this package, send an email to us for product return and replacement. This replacement is the sole remedy available. Liability for incidental or consequential damage is expressly excluded.

BHM002-231012-10-K1 PL08 5CCT 说明书	
材质	80g书纸
尺寸	A3
工艺	黑色双面印刷
刀线	
折线	
备注	对折4次
制图	谢小云 2023.11.09