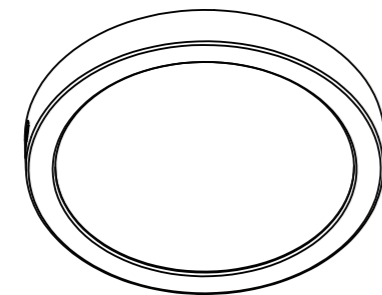


Item:

MRFM511-5CCT
MRFM714-5CCT
MRFM920-5CCT
MRFM1225-5CCT

5/7/9/12Inch 5CCT FLUSH MOUNT CEILING LIGHT



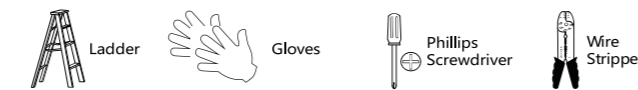
1

IMPORTANT SAFETY INFORMATION

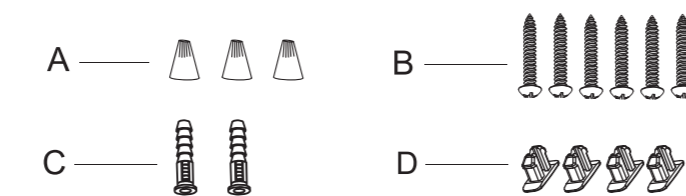
- WARNING : RISK OF SHOCK** House electric current can cause painful shock or serious injury unless handled properly. For your safety, always remember to :
A : Turn off the power supply at the fuse or circuit breaker box before you install the fixture.
B : Ground the fixture to avoid potential electric shocks and to ensure reliable starting.
C : Double-check all connections to be sure they are tight and correct.
D : Wear rubber soled shoes and work on a sturdy wooden ladder.
- This fixture is designed for use in a circuit protected by a fuse or circuit breaker, It is also designed to be installed in accordance with local electrical codes. If you are unsure about your wiring, consult a qualified electrician or local electrical inspector, and check your local electrical code.
- WARNING : RISK OF CUTS** Some metal parts in the fixture may have sharp edges. To prevent cuts and scrapes, wear gloves when handling the parts.
- Account for small parts and destroy packing material, as these may be hazardous to children.

TOOLS REQUIRED (Not Included)(Cont.)

NOTE: Keep your receipt and these instructions for Proof of Purchase.



PACKAGE CONTENT



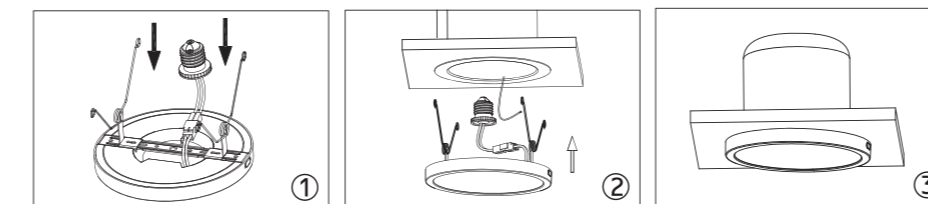
	PARTS	pcs
A	Wire Nuts	3
B	Screws	6
C	Anchors	2
D	Clips	4

2

Product Specification

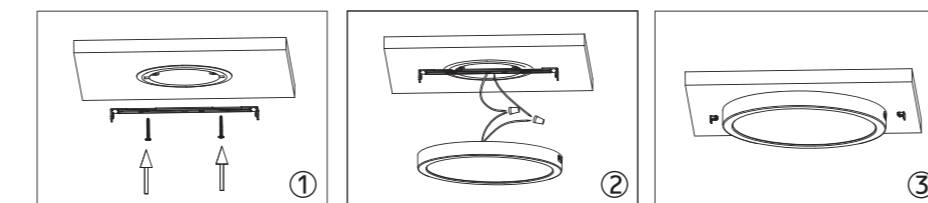
No.	Wattage(w)	Voltage(V)	Rated Input Frequency(Hz)	Beaming(°)	Size(in)
1	11W	AC120V	60Hz	120°	φ5x0.68
2	14W	AC120V	60Hz	120°	φ7x0.68
3	20W	AC120V	60Hz	120°	φ9x0.68
4	25W	AC120V	60Hz	120°	φ12x0.68

Embedded in installation



- Remove trim and existing lamp from recessed fixture;
- Screw E26 socket adapter into socket in the housing;
- Press the friction blade to insert the lamp into the housing and restore power.

Surface mounting installation



- Fixing bracket on terminal box;
- Connecting the wire;
- Fixing the lamp body on bracket and fix tightly.

3

Caution

- WARNING :** Risk of fire. Use AC120V 60Hz circuits.
- Suitable for damp locations. Before installing your lighting fixture, thoroughly review enclosed installation manual. If you do not have sufficient electrical wiring experience, please refer to a professional wiring handbook or have your fixture installed by a qualified licensed electrician. All electrical connections must be in accordance with local and National Electrical Code (NEC) standards. Reliable operating temperature is -20 to +40 degrees Celsius (-4 to +104 degrees Fahrenheit).
- pls obey fire prevention regulations, do not cover the fixture with any heat insulated materials.
- Do not change the LED light source or driver inside under any circumstance.

Warranty: 5 years warranty This product is for indoor use only For use with dimmers

WARNING

This product is warranted for 5 years from the date of purchase. If this product does not perform to the specifications supplied on this package, send an email to us for product return and replacement. This replacement is the sole remedy available. Liability for incidental or consequential damage is expressly excluded.

4

BHMH002-231012-10-K1 PL16 5CCT说明书	
材质	80g书纸
尺寸	297*210mm
工艺	黑色双面印刷
刀线	
折线	
备注	对折4次
制图	谢小云 2023.10.30