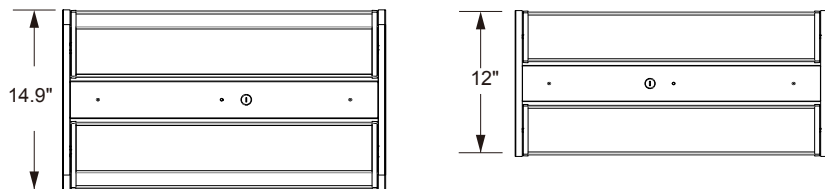
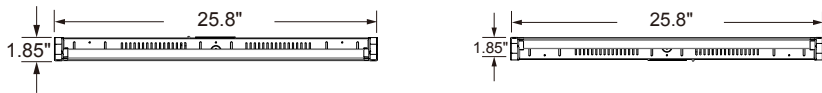
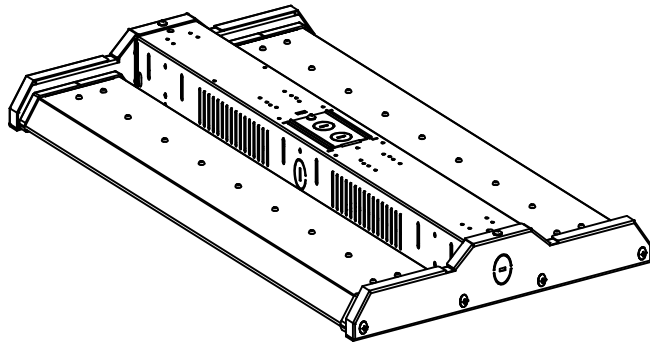


User Manual

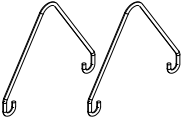
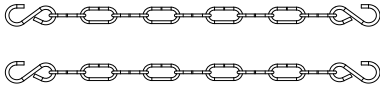
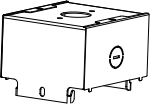
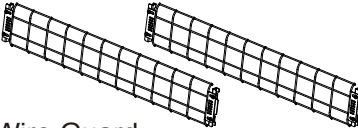
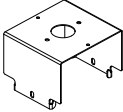
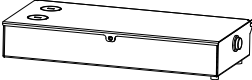
LED High Bay Fixture

Our linear high bay light is a cost-efficient solution and great replacement for metal halides, HID or CFL Bulbs. Upgrading to LED can save you money on your electricity bill, improve visibility, help you work safely, and enhance productivity.



Installation Guide

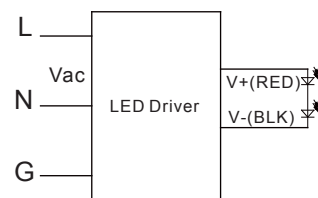
Package Contents

Description	Quantity(set)
Standard	
LED High Bay Fixture	1
User Manual	1
 Suspending Hook	 Hanging Chain
Optional	
 Pendant Mounting Bracket	 Wire Guard
 Surface Mounting Bracket	 Emergency-Kit

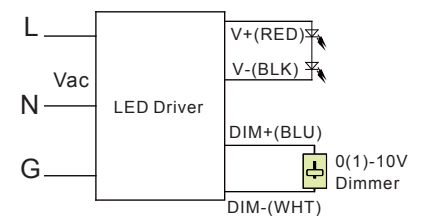
Electrical Schematic Diagram

Without any function, 0(1)-10V Dimming wiring diagram

Without any function



0(1)-10V Dimmer



Installation Guide

BEFORE YOU INSTALL Read these instructions completely and carefully.



- Turn power off before inspection, installation or removal.
- Properly ground electrical enclosure.
- Follow all NEC and local codes.
- Use only UL or IEC approved wire for input/output connections.

Prepare Electrical Wiring

Electrical Requirements

The LED driver must be supplied with 120-277 VAC, 50/60 Hz per product label and connected to an individual properly grounded branch circuit, protected by a 15 or 20 ampere circuit breaker.

Grounding Instructions

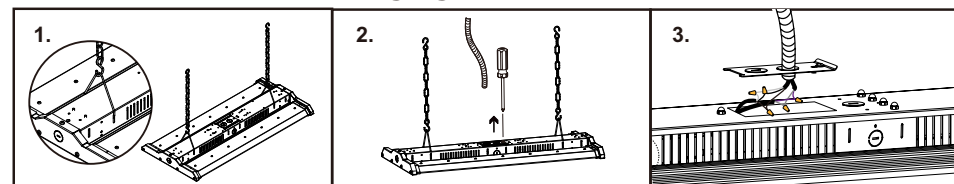
The grounding and bonding of the overall system shall be done in accordance with National Electric Code (NEC) Article 600 and local codes.

Announcements:

1. This equipment is a professional installation. Non-professional personnel shall not remove or install the equipment.
2. To avoid damage, falling, electric shock or fire, please do not modify the lamp or replace accessories without confirming with the supplier.
3. Maintenance/installation and replacement the lamps, please confirm to cut off the power supply, and the lamps have set up a cooling. Please make sure the lamps have been properly installed before processing power.
4. Ensure the accurate and reliable connection.
5. Ensure that the product around the vent, the lamp cannot violate any fire.

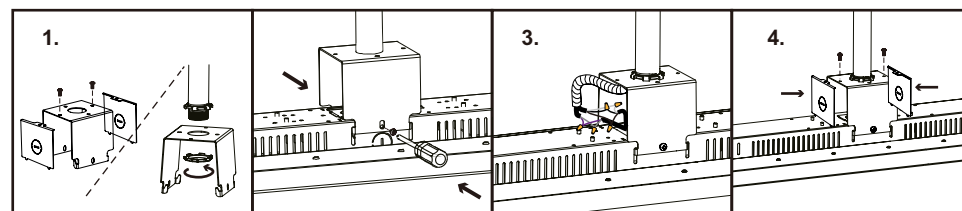
Installation Instruction

Installation method of hanging chain



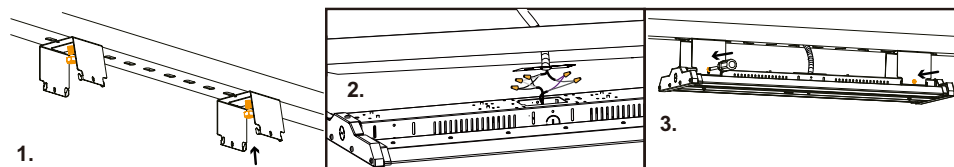
1. Take out the lamp and installation accessories. (Steel wire*2 / hanging chain*2)
2. First buckle the steel wire on the chain, then let the steel wire clip into the hole of the power box at the back of the lamp
3. Hanging the chain on the Suspending hook to complete the installation.

Installation method of circular pipe



1. Take out the lamp and installation accessories.(Ceiling box / circular pipe / I-type bracket / gasket / spring / gasket / nut*2 / screw*3) First fix the ceiling base on the wall with screws, then screw the circular pipe on the ceiling base, and then screw the nut on the circular pipe.
2. First put the I- bracket on the circular pipe, then fixed with gasket / spring gasket and nut.
3. Stuck the lamp on the I-bracket to complete the installation.
4. Align the studs of the side plate with the slots in the housing , set up the side plates , and fix them with screws.

Installation method of ceiling mounting



1. Take out the lamp and installation accessories.(I-type bracket/Screw*4)
2. Fix the i-bracket on the power supply with 4 screws.
3. Stuck the lamp on the I-bracket to complete the installation.