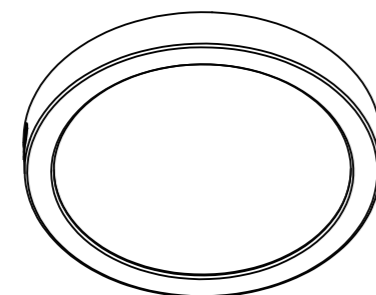


**Item:**  
MRFM-BL-715-5CCT

**7 INCH 5CCT FLUSH MOUNT CEILING LIGHT WITH NIGHT LIGHT**



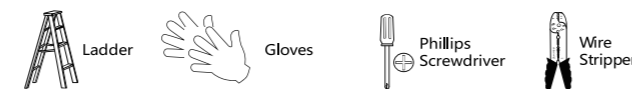
1

**IMPORTANT SAFETY INFORMATION**

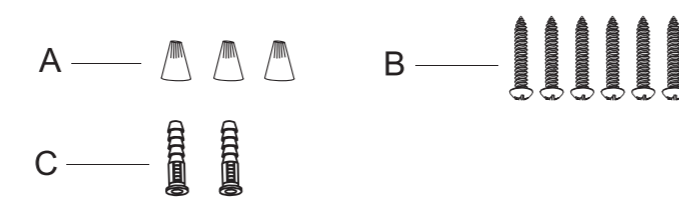
- WARNING : RISK OF SHOCK** House electric current can cause painful shock or serious injury unless handled properly. For your safety, always remember to :  
A : Turn off the power supply at the fuse or circuit breaker box before you install the fixture.  
B : Ground the fixture to avoid potential electric shocks and to ensure reliable starting.  
C : Double-check all connections to be sure they are tight and correct.  
D : Wear rubber soled shoes and work on a sturdy wooden ladder.
- This fixture is designed for use in a circuit protected by a fuse or circuit breaker, It is also designed to be installed in accordance with localelectrical codes. If you are unsure about your wiring, consult a qualified electrician or local electrical inspector, and check your local electrical code
- WARNING : RISK OF CUTS** Some metal parts in the fixture may have sharp edges. To prevent cuts and scrapes, wear gloves when handling the parts.
- Account for small parts and destroy packina material.as thes may be hazardous to children

**TOOLS REQUIRED (Not Included)(Cont.)**

NOTE: Keep your receipt and these instructions for Proof of Purchase.



**PACKAGE CONTENT**



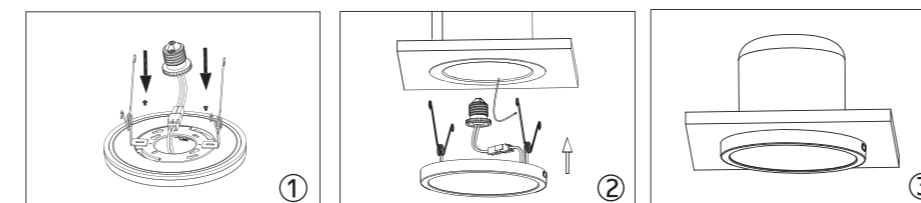
	PARTS	pcs
A	Wire Nuts	3
B	Screws	6
C	Anchors	2

2

**Product Specification**

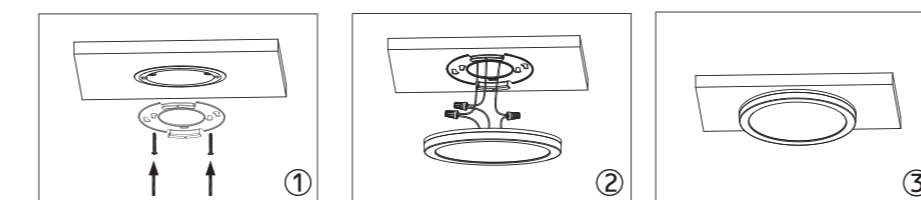
No.	Wattage(w)	Voltage(V)	Rated Input Frequency(Hz)	Beaming(°)	Size(in)
1	12W+3W	AC120V	60Hz	120°	φ7x0.62

**Embedded in installation**



Remove trim and existing lamp from recessed fixture;  
Screw E26 socket adapter into socket in the housing;  
Press the friction blade to insert the lamp into the housing and restore power.

**Surface mounting installation**



Fixing bracket on terminal box;  
Connecting the wire;  
Rotate the lamp to fix it on the bracket tightly

3

**Caution**

- WARNING :** Risk of fire. Use AC120V 60Hz circuits.
- Suitable for damp locations. Before installing your lighting fixture, thoroughly review enclosed installation manual. If you do not have sufficient electrical wiring experience, please refer to a professional wiring handbook for how your fixture is installed by a qualified licensed electrician. All electrical connections must be in accordance with local and National Electrical Code (NEC) standards. Reliable operating temperature is -20 to +40 degrees Celsius (-4 to +104 degrees Fahrenheit).
- pls obey fire prevention regulations, do not cover the fixture with any heat insulated materials.
- Do not change the LED light source or driver inside under any circumstance.

**Warranty:** 5 years warranty This product is for indoor use only For use with dimmers

**WARNING**

This product is warranted for 5 years from the date of purchase. If this product does not perform to the specifications supplied on this package, send an email to us for product return and replacement. This replacement is the sole remedy available. Liability for incidental or consequential damage is expressly excluded.

4

	BHMH002-231012-11-K3 PL18说明书 睿订说明书	
	材质	80g书纸
	尺寸	297*210mm
	工艺	黑色双面印刷
	刀线	
	折线	
	备注	对折4次
	制图	谢小云 2023.11.04