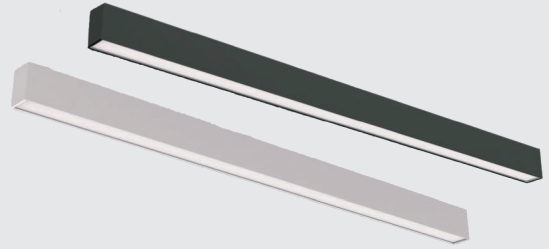


# MLAS Series

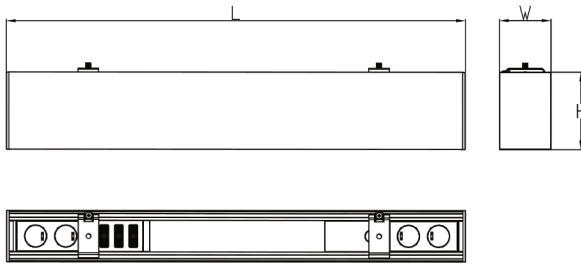
## 5 CCT Architectural Linear Light

Project Name:	Order Number:	Prepare by:	Note:	Date:	Type:

The MLAS series offers LED fixtures in three sizes: 2ft, 4ft, and 8ft. The 2ft model is available in 15, 20, and 25-watt options, the 4ft model in 30, 40, and 50 watts, and the 8ft model in 60, 80, and 100 watts. Each fixture has selectable color temperatures of 3000K, 3500K, 4000K, 5000K, and 6500K and operates within a voltage range of 120-277V. With a CRI of 80+ and UL listed, it ensures both safety and efficiency for a wide range of applications.



### DIMENSION



2FT: 610x50x75(mm)/24.01" x1.97" x2.95"  
4FT: 1220x50x75(mm)/48.03" x1.97" x2.95"  
8FT: 2440x50x75(mm)/96.06" x1.97" x2.95"

### TECHNICAL SUMMARY

MODEL NO.	WATTAGE	LUMENS	CCT	VOLTAGE	DIMMING	CRI	CERTIFICATION
MLAS2FT-15/20/25W-5CCT	15/20/25W	1725/2300/2875LM	30/35/40/50/65K	120-277V	0-10V	80+	UL
MLAS4FT-30/40/50W-5CCT	30/40/50W	3450/4600/5750LM					
MLAS8FT-60/80/100W-5CCT	60/80/100W	5750/7360/11500LM					
MLAS2FT-15/20/25W-5CCT-BK	15/20/25W	1725/2300/2875LM					
MLAS4FT-30/40/50W-5CCT-BK	30/40/50W	3450/4600/5750LM					
MLAS8FT-60/80/100W-5CCT-BK	60/80/100W	5750/7360/11500LM					

### PART NUMBER ORDERING SUMMARY

## MLAS8FT-60/80/100W-5CCT-BK

Architectural Linear Light 8FT  
MW Lighting

60/80/100W  
Wattage

30/35/40/50/65K  
Selectable CCT

Black/ White  
Color



# MLAS Series

## 5 CCT Architectural Linear Light

Project Name:	Order Number:	Prepare by:	Note:	Date:	Type:

### CONSTRUCTION

- Unit includes heavy duty metal frame, LED array, heat sink, hanger, security cable and high quality PC lens.

### OPTICS

- Diffuse for uniform illumination.
- CRI 80

### DRIVER

- 120 - 277V 60Hz universal input voltage
- 0 - 10v smooth flicker free dimming down to 5%

### MOUNTING

Mount to the ceiling, wall, etc.

### LISTING

- UL 8750 LED equipment in Lighting Products

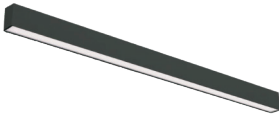
### WARRANTY

5 years manufacturer warranty, consult [www.mwledlighting.com](http://www.mwledlighting.com) for more details.

\* Terms and conditions may apply.

\*5 years limited LED luminaire warranty to the original purchaser that the luminaire shall be free from defects in materials and workmanship from date of shipment, when under properly installed at normal conditions of use. The warranty may not cover physical damage or abuse under certain conditions.

### HIGHLIGHT



#### Versatile Wattage & Size Option

The MLAS series offers LED fixtures in 2ft, 4ft, and 8ft sizes with multiple wattage choices, ensuring flexibility for different lighting needs.

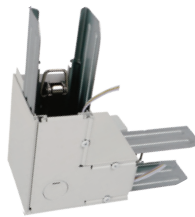
#### Selectable Color Temperature

Each fixture allows users to choose from 3000K, 3500K, 4000K, 5000K, and 6500K color temperature.

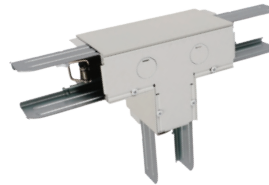
### ACCESSORIES



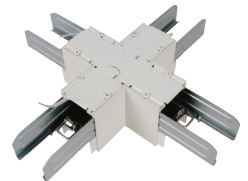
**MLAS-I**  
"I" Joiner



**MLAS-L**  
"L" Joiner



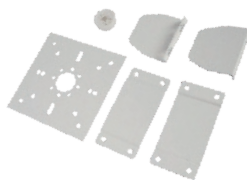
**MLAS-T**  
"T" Joiner



**MLAS-X**  
"X" Joiner



**MLAS-SF-KIT**  
Surface Mount Kit



**MLAS-WM-KIT**  
Wall Mount Kit



**MLAS-PD-CNPY -(BK)**  
Pendant Mount Canopy and Cable  
(White/ Black)



**MLAS-RM-KIT**  
Recessed Mount Kit

