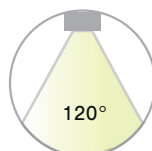
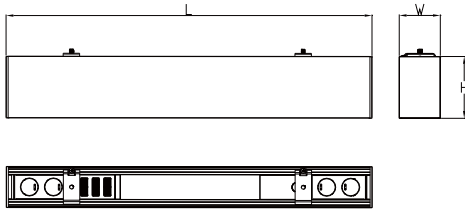


# LED Linear Architectural Light



## Dimensions ■ ■ ■



Model	LxWxH
MLAS2FT-15/20/25W-3CCT	610x50x75(mm)/24.01" x1.97" x2.95"
MLAS4FT-35/45/50W-3CCT	1220x50x75(mm)/48.03" x1.97" x2.95"
MLAS8FT-65/75/90W-3CCT	2440x50x75(mm)/96.06" x1.97" x2.95"

**White**                      **Black**

Lumens:2000/4000/6000LM      Proportion:0%/10%/30%

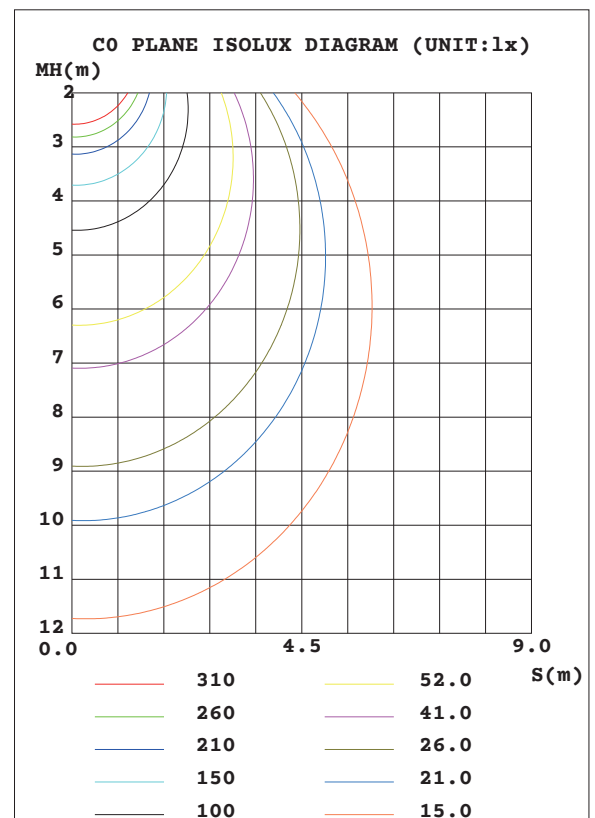
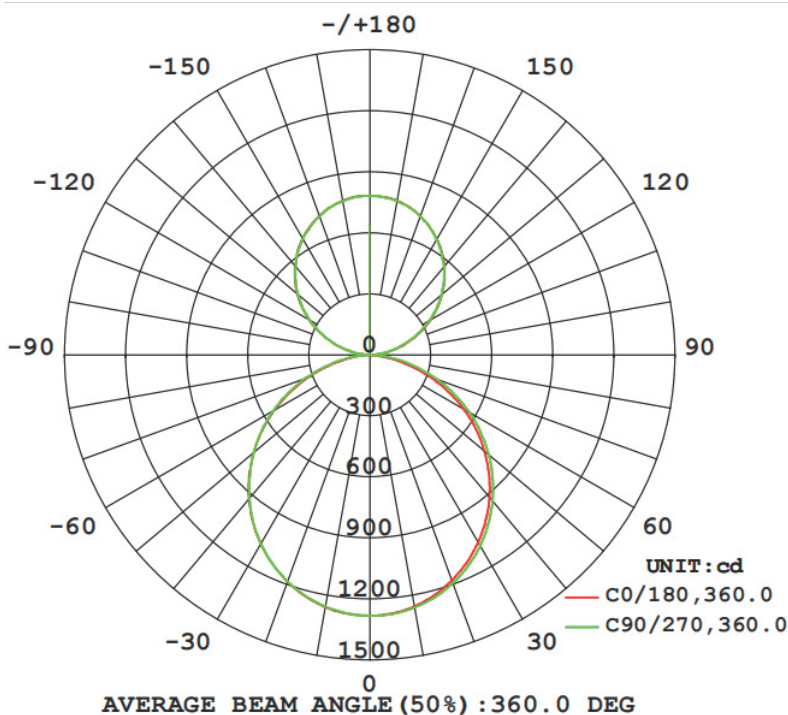
CCT:30/35/40/50/65K

Housing Material: Aluminum  
Optics: PS Lens  
Finish: White, Black

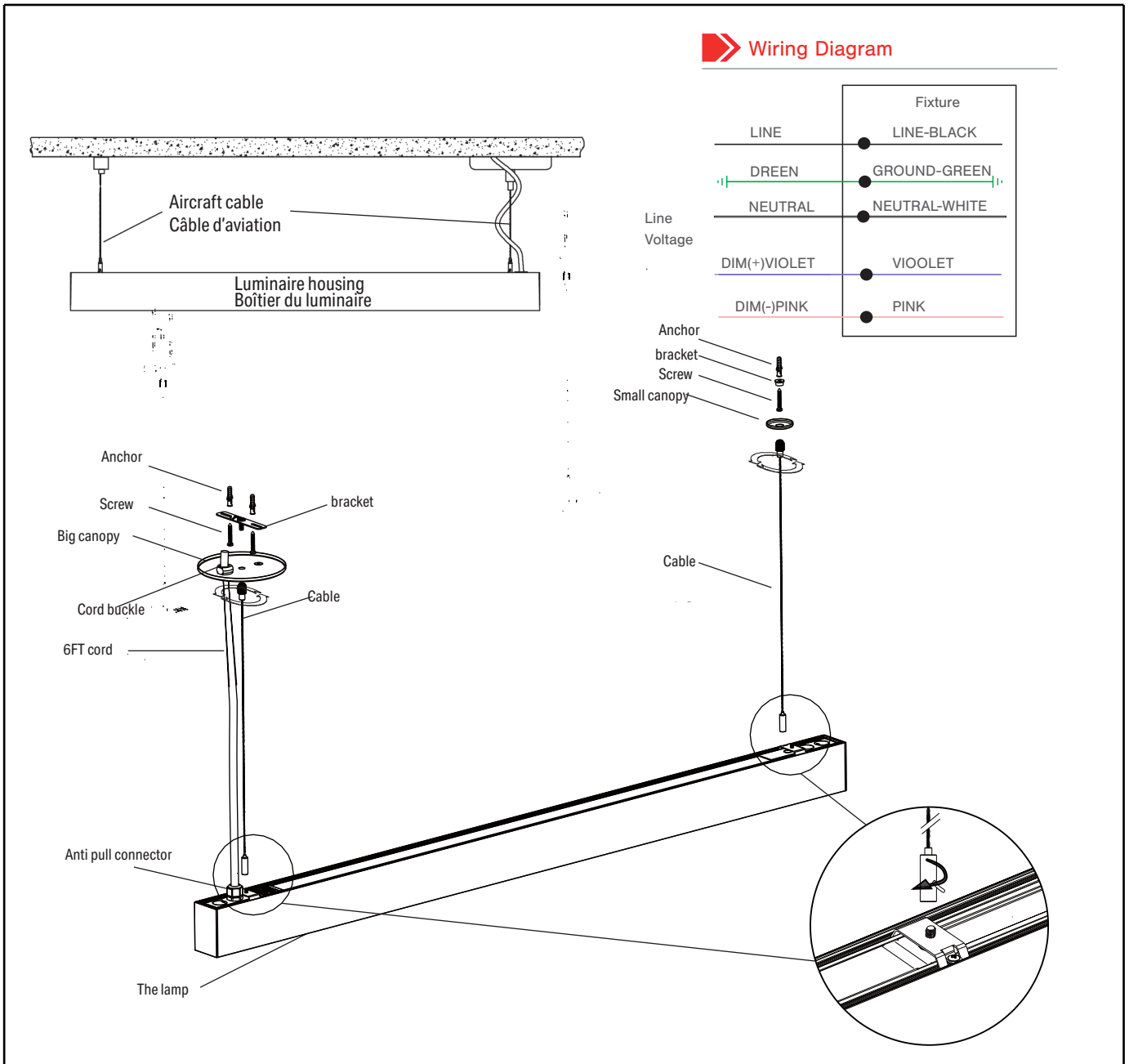
## Specification ■ ■ ■

Part No.	Power	Input Voltage	Luminous Flux	Luminous Efficacy	CCT	Viewing Angle	Ra	PF	Warranty	Emergency Power	Emergency Time
TS-AS1-2FT25W-TCP-XX	15/ 20/ 25W	AC120-277V /AC120-347V	1725/ 2300/ 2875lm	115lm/w	3000K 3500K 4000K 5000K 6500K	120°	>80	>0.9	5 years	8w	90 minutes
TS-AS1-4FT50W-TCP-XX	30/ 40/ 50W		3450/ 4600/ 5750lm								
TS-AS1-6FT75W-TCP-XX	45/ 60/ 75W		5175/ 6900/ 8625lm								
TS-AS1-8FT80W-TCP-XX	50/ 64/80W		5750/ 7360/ 9200lm								
TS-AS1-8FT80W-TCP-XX	60/ 80/100W		5750/ 7360/ 11500 lm								

## Testing Report ■ ■ ■



## Installation instruction



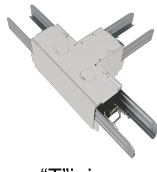
## Accessories



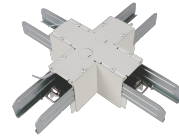
“—”joiner



“L”joiner



“T”joiner



“X”joiner



Surface-mounted kits



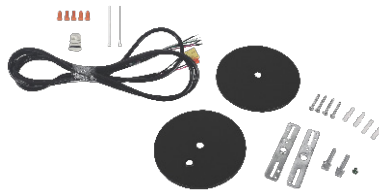
Wall-mounted kits 1



Canopy(for sensor)



End Cap wisensor



LSA-DWC-CNPY-BL



LSA-DWC-CNPY-WH



Recessed Mounting Kits






### Note

1. The installation and maintenance must be completed by electricians or professionals.
2. Please cut off the power before installation and maintenance.
3. The thermally insulating material is not allowed to cover the fixture.
4. Please keep away from the corrosive substance, and keep the fixture dry and clean.
5. Working temperature: -4°F~113°F, storage temperature: -22°F~140°F.

### Important

Read this instruction carefully before installation. Keep it for further reference. Make electrical and grounded connections in accordance with the national electrical code and any applicable code. Always turn off the power supply before installation. This product must be installed in accordance with the applicable installation code by a qualified electrician who is familiar with the construction and operation of the product and the hazards involved.

#### WARNING :

-  Risk of fire or electric shock. Fixture installation requires knowledge of luminaires electrical systems. If not qualified, DO NOT attempt installation. Contact a qualified electrician.
-  Risk of fire or electric shock. Suitable for wet locations. Always turn off the power supply before installation.
-  Risk of fire or electric shock. Suitable for non-insulated surface and frame. DO NOT cover fixture with insulation liner or similar material.
-  DO NOT install fixture on unstable, loose or easily breakable surface.
-  DO NOT exert force on the surface of the fixture.

### Packing /weight

Size	Inner box (L*W*H)	Outer box (L*W*H)	Qty/CTN (pcs)	N.W./pcs (lbs/kg)	G.W./CTN (lbs/kg)	Remark
2ft	27.4"*2.20"*3.62" 695*56*92mm	28.0"* 9.64"*15.4" 710*245*302mm	12	2.98/1.35	38.1/17.3	With inner box
4ft	49.8"*2.20"*3.62" 1265*56*92mm	50.4"* 9.64"* 11.9" 1280*245*302mm	12	4.30/1.95	56.0/25.4	
8ft	97.8"*2.20"*3.62" 2485*56*92mm	98.4"* 7.32"*8.07" 2500*186*205mm	6	8.16/3.70	58.4/26.5	